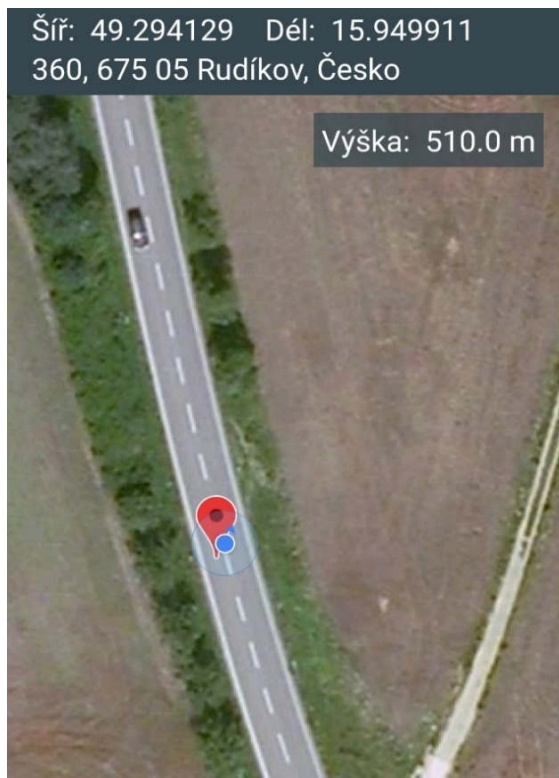


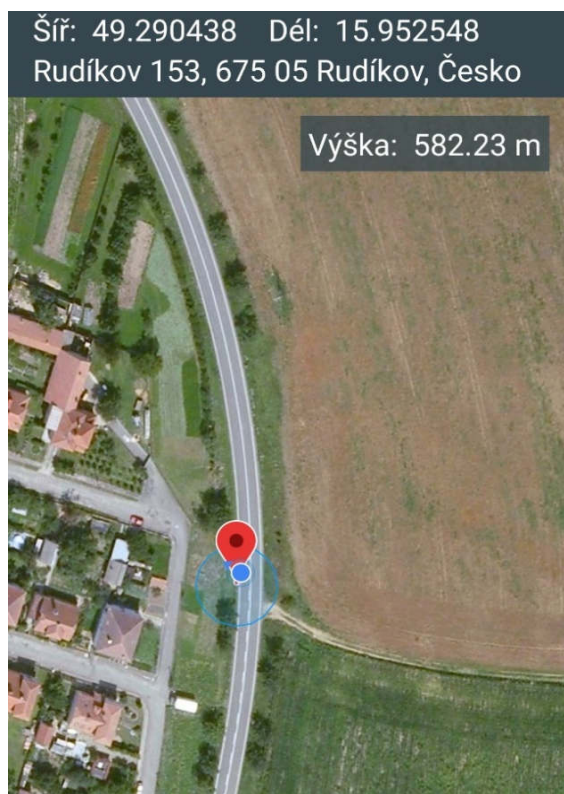
Fotografie sond: II/360 Trnava - Rudíkov

Sonda A

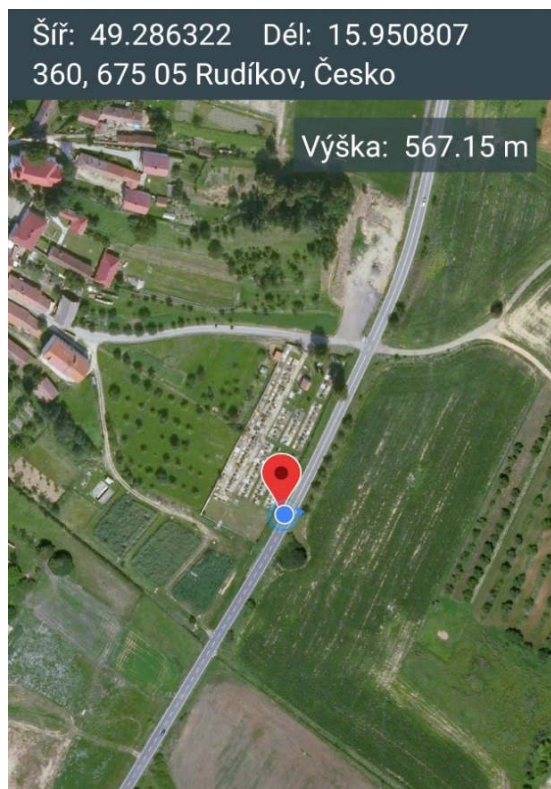
km 115,66 PS, osa 2,1 m, GPS: 49.294129° S; 15.949911° V



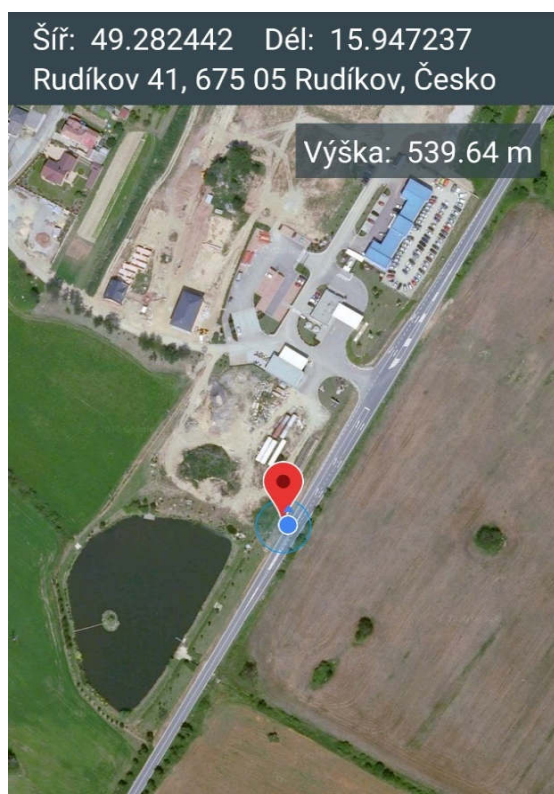
Sonda 1: km 116,13 PS, osa 2,3 m, GPS: 49.290438° S; 15.952548° V



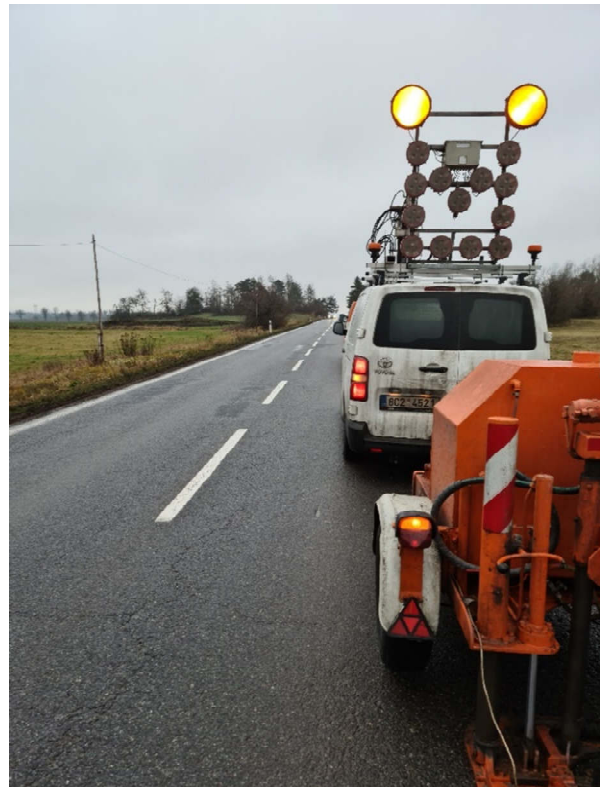
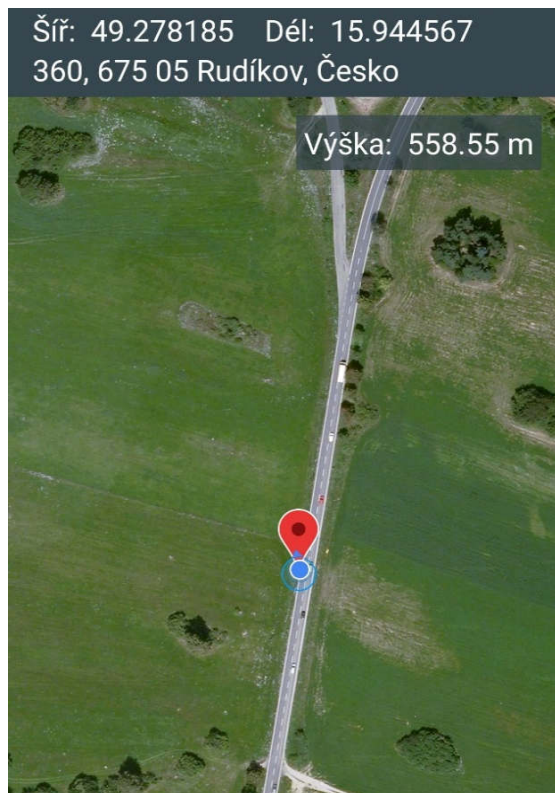
Sonda 2: km 116,613 PS, osa 2,4 m, GPS: 49.286322° S; 15.950807° V



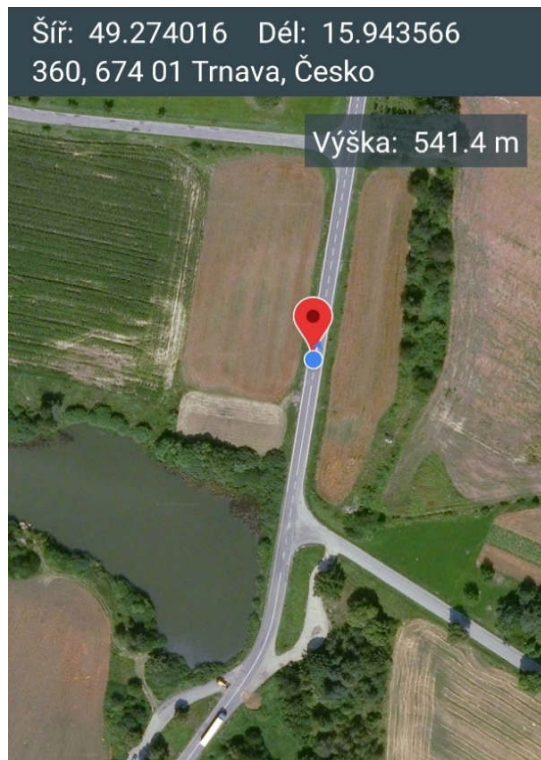
Sonda 3: km 117,12 PS, osa 3,1 m, GPS: 49.282442° S, 15.947237° V



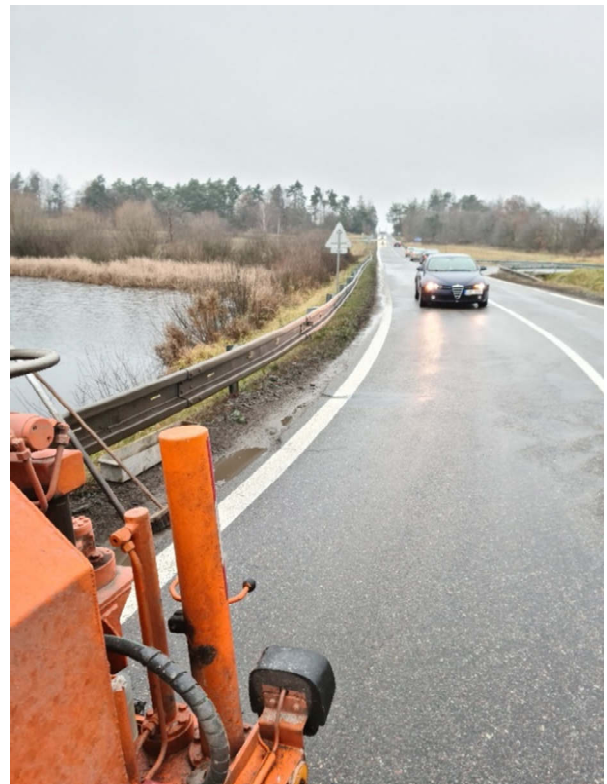
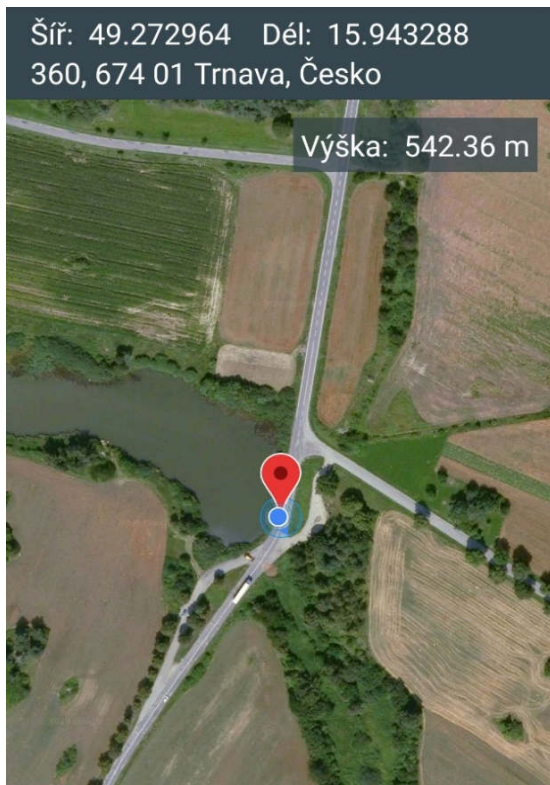
Sonda B: km 117,63 PS, osa 2,0 m, GPS: 49.278185° S, 15.944567° V



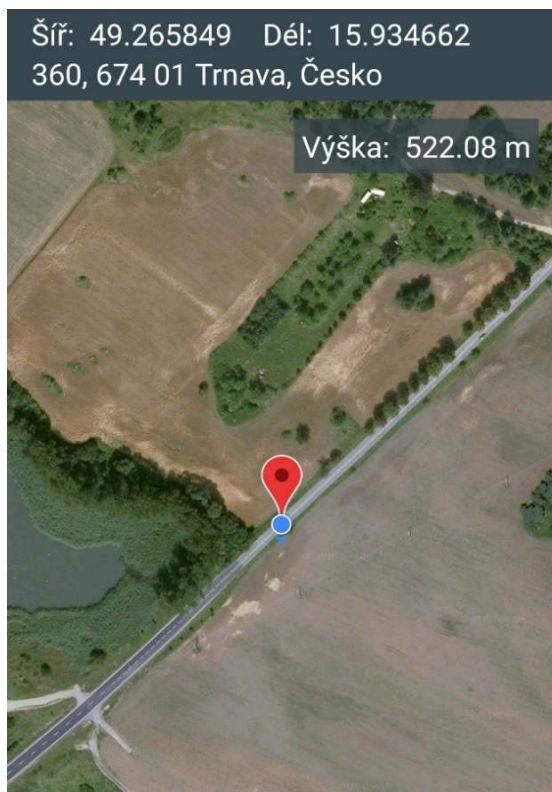
Sonda 4: km 118,105 PS, osa 2,0 m, GPS: 49.274016° S, 15.943566° V



Sonda C: km 118,22 PS, osa 2,0 m, hráz rybníka GPS: 49.272964° S, 15.9

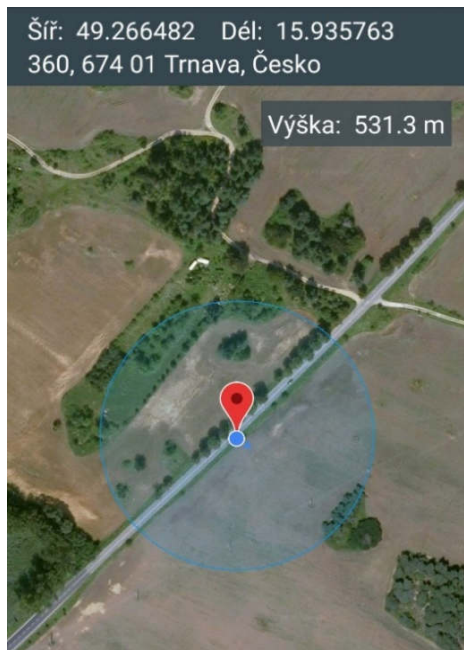


Sonda D: km 119,238 PS, osa 2,1 m, GPS: 49.265849° S, 15.934662° V

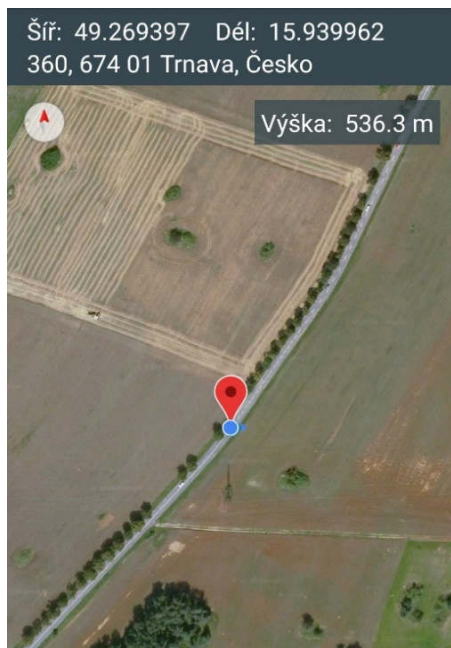


Fotografie sond: II/360 Trnava - Rudíkov

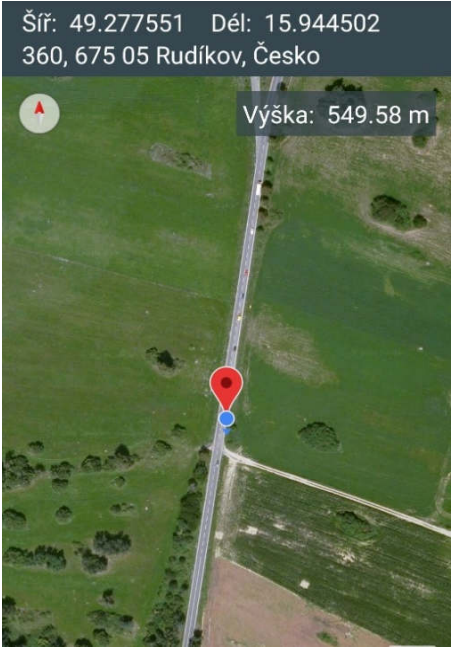
Sonda E km 115,660 PS



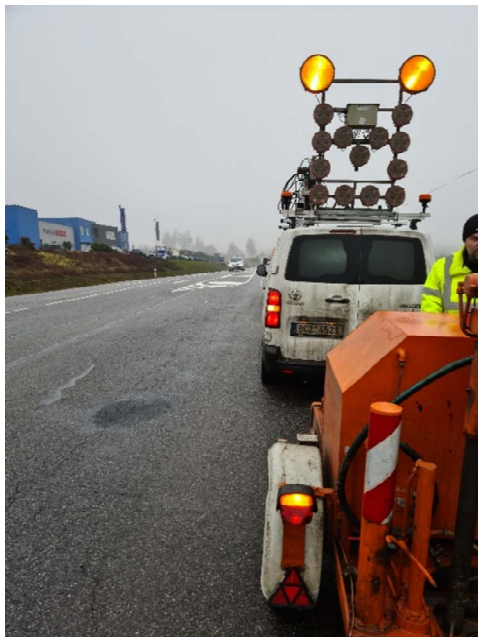
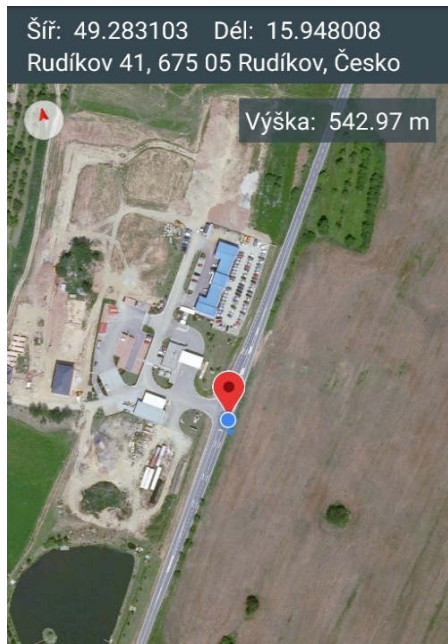
Sonda 5: 115,818, LS



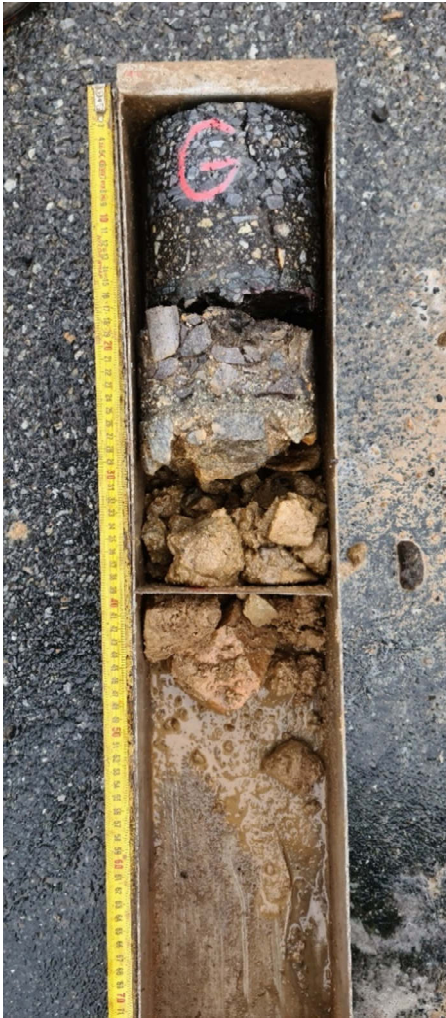
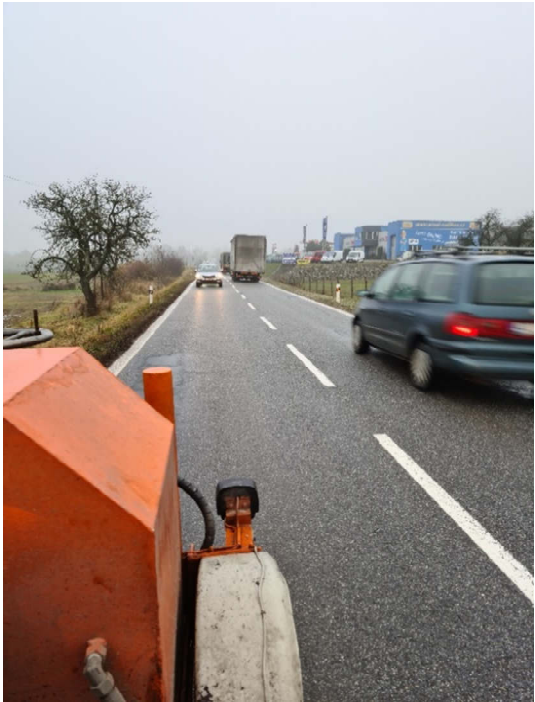
Sonda F: km 116,130, PS



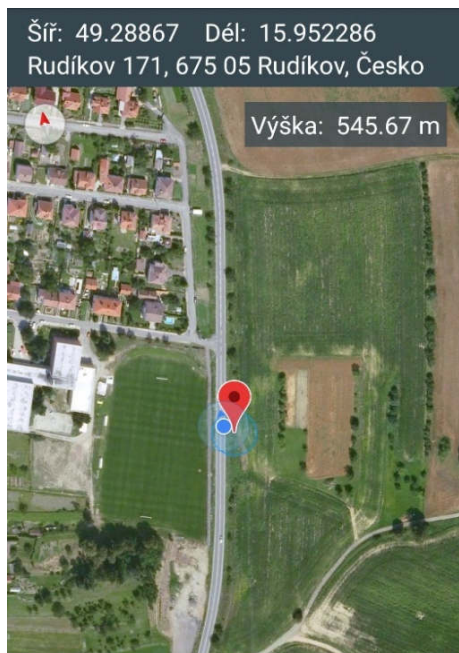
Sonda 6: 116,330, LS



Sonda G: km 116,613 PS



Sonda 7: 116,805, LS



Sonda H: 117,025, LS

